

2017

INFINITI Q60

QUICK REFERENCE GUIDE



INFINITI.

To view detailed instructional videos, go to www.infinitiownersinfo.mobi/2017/q60 or snap this barcode with an appropriate barcode reader.



Helpful Resources

BELOW IS A LIST OF HELPFUL RESOURCES THAT CAN BE USED TO LEARN MORE ABOUT THE VEHICLE'S SYSTEMS AND FEATURE OPERATIONS.

- **VEHICLE OWNER'S MANUAL**
- **INFINITI CLIENT SUPPORT 1-800-662-6200**
Support is always available if your Infiniti retailer cannot assist you or you would like to provide INFINITI directly with comments or questions.
- **INFINITI ROADSIDE ASSISTANCE 1-800-662-6200 (option 1)**
As part of the Infiniti Total Ownership Experience®, Roadside Assistance is available to you, 24 hours a day 365 days a year, for emergency roadside assistance.
- **INFINITI ELITE® EXTENDED PROTECTION PROGRAM 1-800-662-6200**
Infiniti Elite® Assurance Products provide you with quality, long-term protection and enhanced peace of mind.
- **INFINITI FINANCIAL SERVICES CLIENT SUPPORT 1-800-627-4437**
For client support with your Infiniti Financial Services loan or lease.
- **INFINITI FINANCIAL SERVICES www.infinitifinance.com**
Use the IFS Online Account Manager to check your account status, schedule recurring payments and access important forms.
- **OWNER PORTAL 1-855-444-7244 www.owners.infinitiUSA.com/iowners**
Your Infiniti Owner Portal account contains your personal preferences, vehicle information and links to key vehicle features and services.
- **INFINITI INTOUCH™ 1-855-444-7244 usa.infinitiintouch.com**
The suite of services that is your direct link to personal security, convenience and confidence.
- **SiriusXM RADIO 1-877-447-0011**
For support with your SiriusXM subscription.
- **INFINITI USA.COM www.infinitiUSA.com/bluetooth**
Reference this site for a list of compatible cellular phones and instructions on how to pair your cellular phone to your vehicle.
- **INFINITI ELECTRONIC QUICK REFERENCE GUIDE**
(Use the Quick Response (QR) code or URL on this page or on the back cover.)

Table of Contents

Cockpit Overview	1
Instrument Panel	3
Meters and Gauges.....	5
Fuel-filler Door.....	7
Idle Start/Stop (ISS) (if so equipped)	7
Infiniti Intelligent Key System	8
Passenger Rear Seat Entry/Exit	8
Intelligent Cruise Control (ICC) (if so equipped).....	9
Phone Pairing	10
User Registration	10

Lower Display Menu Buttons	11
SiriusXM Travel Link and SiriusXM Traffic (if so equipped)	11
Automatic Power Windows	11
Infiniti InTouch™ Services (if so equipped)	12
Navigation System (if so equipped)	13
HomeLink® Universal Transceiver (if so equipped)	14
Bluetooth® Streaming Audio	14
Upper Display.....	15
FM/AM/HD Radio®/SiriusXM® Satellite Radio	16

Additional information about your vehicle is also available in your Owner's Manual, Navigation System Owner's Manual and at www.InfinitiUSA.com.

PLEASE SEE YOUR OWNER'S MANUAL FOR IMPORTANT SAFETY INFORMATION AND SYSTEM OPERATION LIMITATIONS.

- A cellular telephone should not be used for any purpose while driving so full attention may be given to vehicle operation.
- Always wear your seat belt.
- Supplemental air bags do not replace proper seat belt usage.
- Children 12 and under should always ride in the rear seat properly secured in child restraints or seat belts according to their age and weight.
- Do not drink and drive.



For more information, refer to the “Safety — Seats, seat belts and supplemental restraint system (section 1)”, the “Display screen, heater and air conditioner, and audio system (section 4)” and the “Starting and driving (section 5)” of your Owner's Manual.

Cockpit Overview



5

4

4

3

6

2

7

1

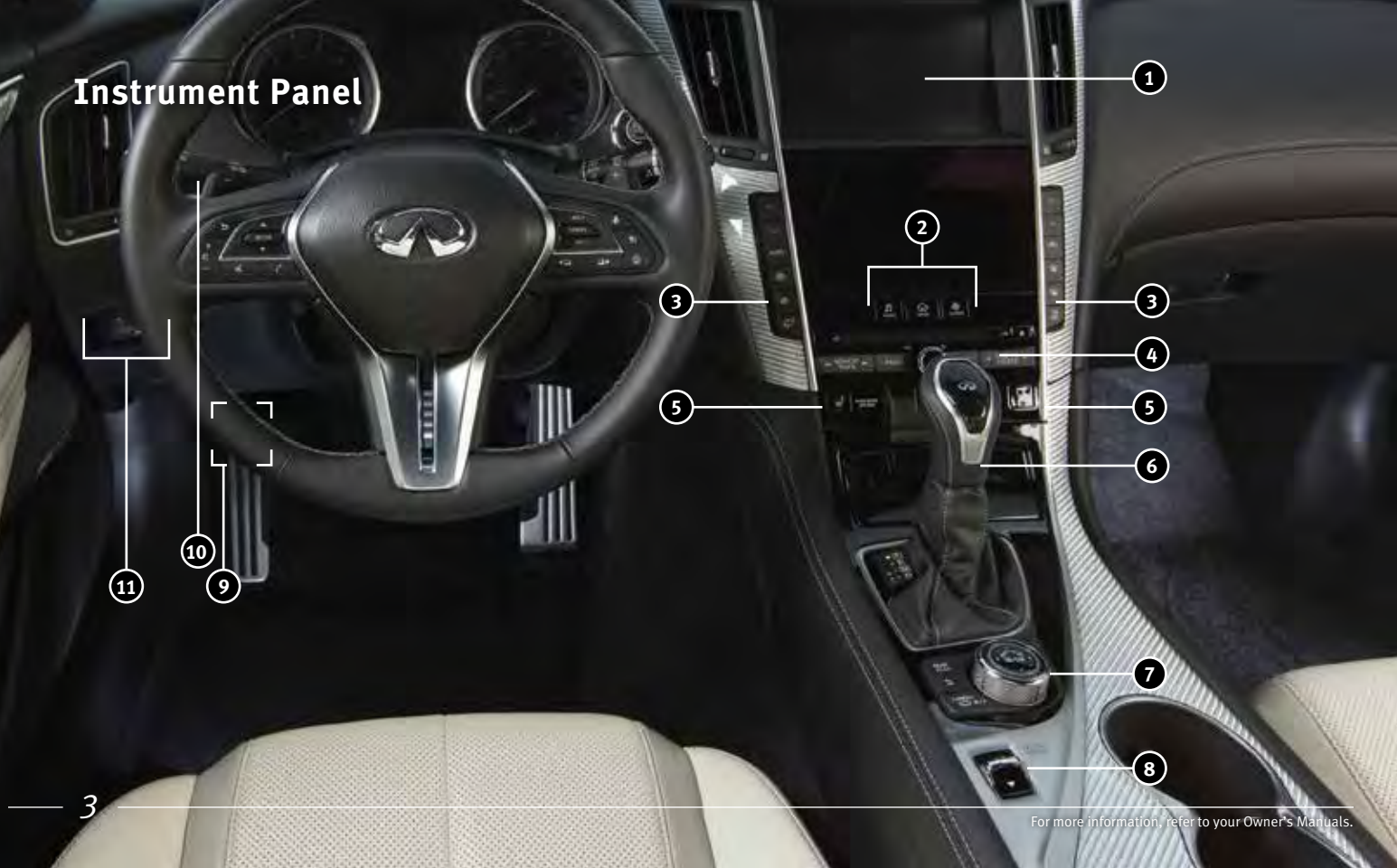
8

1

Cockpit Overview

- 1 Trip computer switches
- 2 Cruise control switches
- 3 Wiper and washer switch
- 4 Paddle shifters (if so equipped)
- 5 Combined turn signal/Headlight control switch
- 6 Vehicle information display control switches
- 7 Audio and Bluetooth® control switches
- 8 Instrument brightness control switches and Trip Reset switch (behind steering wheel)

Instrument Panel



For more information, refer to your Owner's Manuals.

Instrument Panel

- ❶ Multi-function control touch-screen/RearView Monitor display/Around View[®] Monitor display (if so equipped)
- ❷ Lower display menu buttons
- ❸ Climate control panel
 - Heater and air conditioning (automatic)
 - Front/Rear window defroster
- ❹ Audio controls
- ❺ Seat heating (if so equipped)
- ❻ Shift lever
- ❼ Infiniti multi-function controller
- ❽ Drive mode switch
- ❾ Parking brake (behind steering wheel)
- ❿ External light switches
- ⓫ Lower switch bank
 - Idle Stop/Start (ISS) OFF switch (if so equipped)
 - Vehicle Dynamic Control (VDC) OFF Switch
 - Trunk release switch

Meters and Gauges



Meters and Gauges

-
- 1 Speedometer
 - 2 Fuel gauge
 - 3 Vehicle information display
 - 4 Shift lever indicator
 - 5 Tachometer
 - 6 Engine coolant temperature gauge

Fuel-filler Door

To open the fuel-filler door, unlock the vehicle and gently push the middle left side of the fuel-filler door.



Idle Stop/Start (ISS) (if so equipped)

The ISS activates to prevent unnecessary fuel consumption, exhaust emissions and noise.

- When the brake pedal is depressed and the vehicle is stopped, the engine will stop automatically.
- When you release your foot from the brake pedal, the engine will restart automatically.
- The ISS indicator light ① will inform you of the ISS status.
- The system can be temporarily deactivated by pushing the Idle Stop OFF ^{AUTO}OFF switch ②.
- There are certain conditions in which the ISS will not activate, including:
 - When the brake pedal is not firmly depressed.
 - When the steering wheel is operated or wheels are not pointed straight ahead.
 - When the engine is warming up.
 - When the cabin temperature is below 68°F (20°C) or above 86° F (30°C).
 - When the front/rear defroster is on or fan speed is at maximum.
- Please refer to the “Starting and driving (section 5)” of your Owner’s Manual for the additional conditions in which the ISS will not activate.



Infiniti Intelligent Key System

REMOTE ENGINE START¹ (IF SO EQUIPPED)

- The remote engine start system must be enabled in the vehicle settings within the lower display. To start your vehicle remotely:
 1. Press the lock button ① to lock the vehicle.
 2. Press and hold the remote start button ② within 5 seconds of pressing the lock button ① and the engine will start.
- To start driving, depress the brake pedal and press the ignition switch **START/STOP** button.



ROLL DOWN FEATURE

The windows can be opened remotely using your Infiniti Intelligent Key.

- Press and hold the unlock button ③ to open the windows and moonroof (if so equipped) remotely.
- If the unlock button ③ is released, the windows will stop. To resume the roll down feature, press and hold the unlock button ③ again.

¹For disclaimer, refer to page 17 of this guide.

Passenger Rear Seat Entry/Exit

To access the rear seat:

1. Pull the lever ① upward to fold the seatback forward.
2. Press the button ② to slide the front seat forward and press the button ② again to stop the seat.



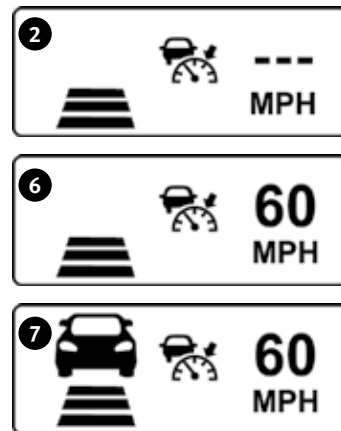
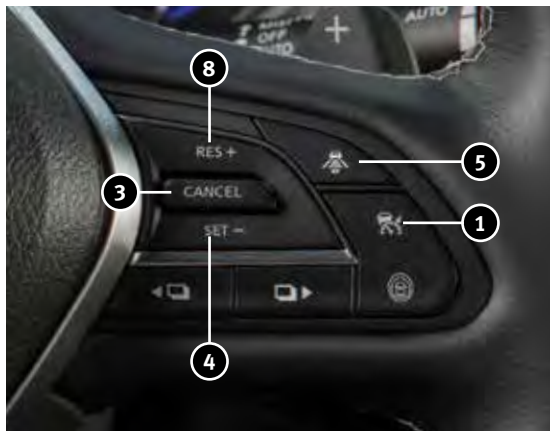
To return the front seat to its original position:

1. Pull the lever ① upward and push the seatback to the locked, upright position.
2. Press the button ② to slide the front seat backward.

Intelligent Cruise Control (ICC) (if so equipped)

The vehicle's cruise control maintains a constant set speed for you. The system is operational only at speeds above 20 mph (32 km/h).

- Press the Cruise Control On/Off button ① to turn the system on and off. The indicator lights will illuminate ② and extinguish in set mode.
- Push down the **CANCEL** switch ③ toward **SET-** ④ and release it to set the desired speed.
- To set at a slower cruising speed, push down and hold the **CANCEL** switch ③ until the desired speed is reached.
- Press the vehicle-to-vehicle distance button ⑤ repeatedly to change the set distance.
- When a vehicle is not detected ahead, the set distance and set vehicle speed indicator lights will illuminate ⑥ in set mode.
- When a vehicle is detected ahead, the vehicle ahead detection, set distance and set vehicle speed indicator lights will illuminate ⑦ in set mode.
- Push up on the **CANCEL** switch ③ toward **RES+** ⑧ and release it to resume the set speed.

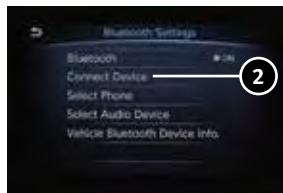


- To set a higher cruising speed, push up and hold the **CANCEL** switch ③ until the desired speed is reached.
- Push the **CANCEL** switch ③ to cancel the set speed. The set vehicle speed indicator ⑥ will change to gray.

Phone Pairing²

Using Bluetooth^{®,3} technology, you can connect (pair) your cellular phone with the in-vehicle system for hands-free use of your cellular phone.

1. Press the **MENU** button **①** below the lower display.
2. Touch the “Settings” key on the lower display.
3. Touch the “Bluetooth” key.
4. Touch “Connect Device” **②**.
5. Touch “Add New (X/5 Free)”.



6. When the “Connect Device” screen appears, operate the Bluetooth^{®,3} device to enter/confirm the PIN.

SYSTEM OPERATING TIPS

If the Voice Recognition system does not recognize your voice commands:

1. Be sure to wait for the tone/beep before speaking a command.
2. Reduce background noise as much as possible by closing the windows and moonroof.
3. Make sure there are no other conversations in the car at the same time.

4. Lower HVAC blower fan speed and point vents away from the ceiling microphone.
5. Speak naturally. Speaking too fast, too slow, too soft, or too loud makes voice recognition more difficult.
6. Confirm that the correct voice commands are being used. Glance at the screen to see the currently available commands.

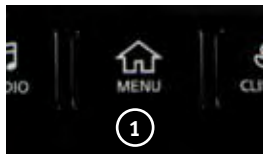
^{2,3} For disclaimer, refer to page 17 of this guide.

User Registration

Up to three users can have their driving positions, navigation, climate controls, etc., memorized.

- To register a new user:

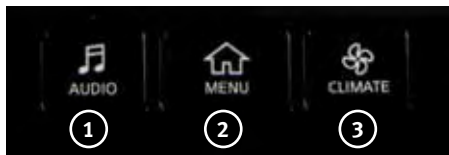
1. Press the **MENU** button **①** below the lower display.
2. Touch the right arrow key **➤** on the lower display until “Infiniti InTuition” **②** is displayed. Then touch the “Infiniti InTuition” key **②**.



3. Touch “User List”.
4. Touch “Add New”. From here, you can edit Name **③** and Icon **④**.
5. Touch “OK” **⑤** when finished.



Lower Display Menu Buttons



The lower display menu buttons are located below the lower display on the instrument panel.

- 1 Press to display the main audio screen.
- 2 Press to display the main menu screen.
- 3 Press to display the main climate screen.

SiriusXM Travel Link and SiriusXM Traffic⁴ (if so equipped)

Your vehicle's Navigation System is equipped with SiriusXM Travel Link and SiriusXM Traffic capabilities.

SiriusXM Travel Link provides access to real-time weather information and forecasts, nearby fuel prices, movie listings, sports scores and stock quotes.

SiriusXM Traffic provides information that may help to avoid delays due to traffic incidents. Traffic jams, roadwork, road closures around the current location, etc., are represented graphically on the map by icons depicting the nature of the event. Incidents on the route are automatically displayed as they are approached.

⁴For disclaimer, refer to page 17 of this guide.

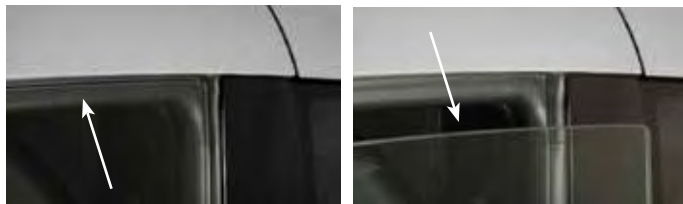
Automatic Power Windows

Your power windows have an automatic adjusting function to ensure windows close completely to help seal against wind noise and weather leaks.

- When the front doors are being opened, the windows automatically lower slightly to avoid contact between the windows and the side roof panels.

If your vehicle's battery is discharged or disconnected, your power window automatic function will not operate.

- Refer to your Owner's Manual for information to initialize your power window system.
- If the power window functions do not operate properly after initializing the system, it is recommended that you have your vehicle checked by an Infiniti retailer.



Infiniti InTouch™ Services⁵ (if so equipped)

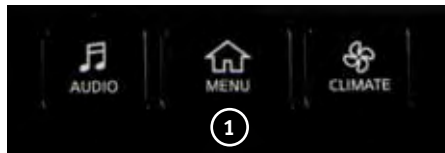
Infiniti InTouch™ Services combine personalized convenience settings and personal security features to compliment the Total Ownership Experience®. For more details on Infiniti InTouch Services or to enroll your vehicle, please visit usa.infinitiintouch.com or call **1-855-444-7244**.

To access Infiniti InTouch Services:

1. Press the **MENU** button ① under the lower display.
2. Select the “InTouch Services” key ② on the lower display.
- Press in-vehicle telematics **SOS** button ③ in case of an emergency, located above and in front of the rearview mirror.

Available services include, but are not limited to:

- Automatic Collision Notification
- Emergency Calling
- Enhanced Roadside Assistance
- Report Stolen Vehicle
- Alarm Notification
- Maintenance Alert
- Vehicle Health Report
- Scheduled Maintenance Notification
- Remote Door Lock/Unlock
- Remote Light and Horn
- Remote Engine Start/Stop
- Maximum Speed Alert
- Valet Alert
- Curfew Alert
- Destination Send-to-Vehicle
- Destination Assistance
- Connected Search



INFINITI INTOUCH SERVICES ENROLLMENT

1. Create an Infiniti Owner Portal account. (<https://owners.infiniti.com/iowners/>)
2. From your Infiniti Owner Portal account, enroll in Infiniti InTouch Services.
3. Download the Infiniti InTouch Services companion app from the App store and log in using your Infiniti Owner Portal ID and password.

⁵For disclaimer, refer to page 17 of this guide.

Navigation System (if so equipped)

Your Navigation System can calculate a route from your current location to a preferred destination. The real-time map display and turn-by-turn voice guidance will lead you along the route.

SYSTEM OPERATION

- Rotate the Infiniti Controller **①** to highlight an item on the screen or zoom in or out on the map.
- Press the **OK** button **②** to select the highlighted item.
- Press the back button **③** to return to the previous screen.
- Press the **MAP VOICE** button **④** to display the map on the upper display.
- Press and hold the **CAMERA** button **⑤** to switch between the day screen (bright) and the night screen (dark). Press and hold the **CAMERA** button **⑤** to bring up the adjustment settings for the screen.
- Lower display screen **⑥** that displays navigation functions and is not controlled by the Infiniti controller **①**.
- Press the **MENU** button **⑦** below the lower display to access the navigation functions.

SETTING A ROUTE WHILE PARKED

1. Press the **MENU** button **⑦**.
2. Touch the “Destination” key **⑧**.
3. Touch the “Street Address” key.

4. Enter the House Number and select “OK”.
5. Enter the preferred Street Name/City and select “OK”.
6. Touch “Start” on the lower display.

SETTING ROUTE WHILE DRIVING USING VOICE RECOGNITION

1. Press the Voice Recognition button **⑨** on the steering wheel. Wait for the prompt.
2. Say “Navigation”.
3. Say “Street Address”.
4. Say the address using - House Number, Street, and City only. Wait for the prompt.
5. Say the correct item number to select the address.
6. Push **START** on the lower display.

CANCELING A ROUTE

1. Press the **MENU** button **⑦**.
2. Touch the “Cancel Route” key **⑩**.

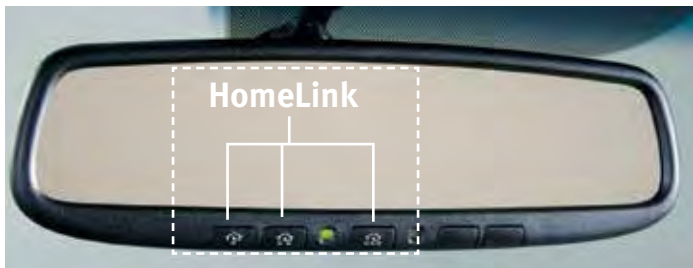


HomeLink® Universal Transceiver⁶ (if so equipped)

To program the HomeLink® Universal Transceiver:

1. Position the handheld transceiver 1-3 in (26-76 mm) away from the HomeLink surface, keeping the HomeLink indicator light in view.
2. Press and hold the desired HomeLink button and the handheld transmitter button simultaneously until the HomeLink indicator light flashes slowly and then rapidly.
3. Both buttons may now be released.
4. Press and hold the HomeLink button, and a blinking light that turns to a solid, continuous light after 2 seconds will display.
5. At the receiver of the device press and release the program button (this button can typically be found near the hanging antenna wire of the device you are programing into HomeLink).

⁶For disclaimer, refer to page 17 of this guide.



6. Press and hold the programed HomeLink button for 2 seconds and release.

Bluetooth® Streaming Audio³

If you have a compatible Bluetooth^{®3} device with streaming audio, you can set up a wireless connection between your Bluetooth^{®3} device and the in-vehicle audio system, enabling you to listen to the audio from your device through the vehicle's audio system.

³For disclaimer, refer to page 17 of this guide.

After connecting your Bluetooth^{®3} device:

1. Press the **AUDIO** button below the lower display.
2. Touch the “Source” key.
3. After Bluetooth^{®3} Streaming Audio is selected, touch “Play”.

- Bluetooth^{®3} connectivity issues can usually be resolved by rebooting your cellular phone. Otherwise, try updating your cellular phone with the latest software.

Upper Display

To control the upper display, use one of the following:

- The touch-screen ①.
- The Infiniti controller ②.
- Press the **OK** button ③ to select an item.
- The steering wheel switches ④.
- Press the back button ⑤ to return to the previous page.
- Press the **MAP/VOICE** button ⑥ to display the map.
- Press the **CAMERA** button ⑦ to change the brightness of both the upper and lower displays.



MAP AND DISPLAY VIEW (WITH NAVIGATION)

- There are different variations of split-screen views that can be displayed on the upper display. The map is always displayed on the right-hand side of the screen.
- To customize the split-screen views on the upper display:
 1. Press the **MENU** button while the current location map screen is displayed and the display view bar will appear at the bottom of the screen.
 2. Touch the desired icon on the display view bar or use the Infiniti controller ② to scroll through the possible options. Press the **OK** button ③ to select the desired option.



FM/AM/HD® Radio/SiriusXM® Satellite Radio⁷

- Press the **AUDIO** button ① to display the “AUDIO” screen on the lower display.
- Press the **POWER** button ② to turn the system on or off. Turn the knob to the right or left to increase or decrease the volume.
- Press **◀◀** or **▶▶** button ③ to scan quickly through each broadcasting station. Press again to stop at the previous or next broadcasting station.
 - For satellite radio, press **◀◀** or **▶▶** button to switch to the first channel of the previous or next category.
 - For HD Radio®, press **◀◀** or **▶▶** button ③ to change the station.
 - For CD, press **◀◀** or **▶▶** button ③ to change tracks.
 - Press and hold **◀◀** or **▶▶** button ③ to rewind or fast forward a track.
- Press **◀** or **▶** button ④ to manually tune the radio.
 - Press and hold **◀** or **▶** button ④ to accelerate radio tuning.



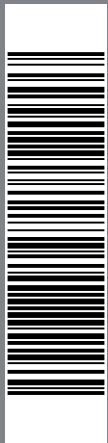
- Press the **RADIO** button ⑤ to change the radio band in the order of AM, FM and satellite radio.
- Press the **DISC • AUX** button ⑥ to change the audio source (CD, iPod®, USB, Bluetooth® Streaming Audio or AUX).
- To store a station in a preset, tune to the desired AM, FM or satellite radio station.
 - Now touch and hold the desired station memory key ⑦ (1-36) until the preset number is updated on the display and a beep is heard. Programming is now complete.

⁷For disclaimer, refer to page 17 of this guide.

Disclaimers

- ¹ State laws may apply; review local laws before using.
- ² Some jurisdictions prohibit the use of cellular telephones while driving. Compatible smartphone required. Text rates and/or data usage may apply.
- ³ Availability of specific features is dependent upon the phone's Bluetooth® support. Please refer to your phone owner's manual for details. Bluetooth® word mark and logos are owned by Bluetooth SIG, Inc.,
- ⁴ Required monthly subscriptions sold separately for each available SiriusXM feature after trial period. Subscriptions governed by Customer Agreement available at siriusxm.com. Each SiriusXM feature availability is dependent upon vehicle model, trim level, packaging, and/or options, and may only be available in select markets. For more information, see www.siriusxm.com.
- ⁵ Driving is serious business. Only use Infiniti InTouch Services and Infiniti InTouch Services Premier when safe to do so. Never program while driving. GPS mapping may not be detailed in all areas or reflect current road status. Services, including automatic crash notification and SOS, require an active subscription, and are dependent upon the telematics device being in an operative condition, its ability to connect to a wireless network, compatible wireless network availability, navigation map data, and GPS satellite signal receptions, the absence of which can limit or prevent the ability to reach Infiniti InTouch Services Customer Care or receive support. Services require compatible 3G GSM/GPRS cellular network provided by AT&T. 3G cellular network not available in all areas and/or available at all times. Cellular technology is evolving, and changes to cellular networks provided by independent companies are not within Infiniti's or Sirius XM Connected Vehicle Service's Inc.'s control. Certain vehicle services, including Google® compatible services, provided by independent companies are not within Infiniti's or SiriusXM's control and are subject to change without notice or liability to Infiniti, its affiliates and agents or SiriusXM. Like other devices that rely on network coverage, once the network service is discontinued, Infiniti InTouch services will not function unless equipment replacements, upgrades, or alternative network coverage are available at that time, which neither Infiniti nor Sirius XM can guarantee. Infiniti and Sirius XM are not responsible for associated costs that may be required for continued operation due to cellular network shutdown or discontinuation (including equipment upgrades, if available, or roaming charges on alternative networks). 6 month trial subscription begins on your date of purchase or lease of your new Infiniti. Subsequently, your credit card (if on file) will be charged at the then current subscription rate and your service will renew automatically under the terms of your subscription. Standard text rates and/or data usage may apply. Terms and Conditions of Subscription Agreement apply. See www.infinitiusa.com/intouch for more information.
- ⁶ For more information, refer to the "Instruments and controls (section 2)" of your Owner's Manual, the HomeLink website at www.homelink.com or call 1-800-355-3515.
- ⁷ SiriusXM® Satellite Radio is only available on vehicles equipped with an optional satellite radio subscription service.

Memo



This Quick Reference Guide is intended to provide an overview of some of the unique features of your new vehicle. Please see your Owner's Manual for important safety information and system operation limitations. Features and equipment in your vehicle may vary depending on model, trim level, options selected, order, date of production, region or availability. Therefore, you may find information about features or equipment that are not included or installed on your vehicle.

All information, specifications and illustrations in this Quick Reference Guide are those in effect at the time of printing. INFINITI reserves the right to change specifications, performance, design or component suppliers without notice and without obligation. From time to time, INFINITI may update or revise this Quick Reference Guide to provide owners with the most accurate information currently available. Please carefully read and retain, with this Quick Reference Guide, all revision updates sent to you by INFINITI to ensure you have access to accurate and up-to-date information regarding your vehicle. Current versions of vehicle Quick Reference Guides, Owner's Manuals and any updates can also be found in the Owner section of the INFINITI website at **<https://owners.infinitiusa.com/owners/navigation/manualsAndGuides>**.

If you have questions concerning any information in your Owner's Manual, contact INFINITI Client Support (see contact information listed above).



To view detailed instructional videos, go to **www.infinitiownersinfo.mobi/2017/q60** or snap this barcode with an appropriate barcode reader.



INSPIRED PERFORMANCE